

Auto-Installer Deluxe v4.53 Lite

Official Users Manual



DISCLAIMER: We do not take any responsibility for any damage or loss of data that may be caused by this program. Always only use at your own risk, and remember to read this manual **CAREFULLY** before proceeding to use this package. If you do not read this and do something incorrectly, it is your own fault.

This document is not affiliated with Microsoft Corporation.
'Microsoft' and 'Xbox' are trademarks of Microsoft Corporation.

GNU General Public Licence

Auto-Installer Deluxe and Softmod Installer Deluxe are used for learning purposes on the Xbox Console. Copyright (C) 2004-2011 by DJB

This program is free software; you can redistribute it under the terms of the GNU General Public License as published by the Free Software Foundation; either version 2 of the License, or (at your option) any later version.

This program is distributed in the hope that it will be useful, but WITHOUT ANY WARRANTY; without even the implied warranty of MERCHANTABILITY or FITNESS FOR A PARTICULAR PURPOSE. See the GNU General Public License for more details.

You should have received a copy of the GNU General Public License along with this program; if not, write to the Free Software Foundation, Inc.,
51 Franklin St, Fifth Floor, Boston, MA, 02110-1301 US

TABLE OF CONTENTS:

Chapter 1: Introduction.....	1
Chapter 2: Features.....	2
Contents of the Auto-Installer	2
Features of the Auto-Installer.....	4
Chapter 3: Preparing the AID 4.53 disc on your PC	5
Extracting the AID 4.53 Archive.....	5
Chapter 4: Burning the ISO with DVD Decrypter	6
Chapter 5: The Main menu for AID 4.53	7
Chapter 6: Preparing your Xbox Hard Drive	8
Backup / Restore your Hard Drive.....	8
Format / Prepare your Hard Drive	9
Chapter 7: One-Click Installs.....	10
Modchip Users	10
Softmod Users	11
Chapter 8: Installing Dashboards.....	12
Installing the Microsoft Dashboard	12
Installing a Hacked Dashboard	13
Chapter 9: Installing Applications	14
Chapter 10: The Softmod Section	15
Single Boot Softmod Options.....	16
Dual Boot Softmod Options.....	16
Unmounting the Virtual C Drive	16
Removing the SID Softmod from your Xbox	16
Chapter 11: The Advanced Options / Tools Section.....	17
Installing AID 4.53 to HDD	17
Phoenix BIOS Loader (PBL)	17
Installing SID 5 to HDD or Memory Card.....	18
XSelect	18
BIOS Checker	19
BIOS Flasher	19
Chimp	19
ConfigMagic.....	19
Enigmah NTSC-PAL Video Switcher	19
Xbpartitioner	19
Appendix A: Xbox Error Codes.....	20
Appendix B: Xbox Media Compatibility	25
Appendix C: Xbox DVD Drive Identification.....	25
Appendix D: Menu Structure	26
Appendix E: File Locations on the ISO	31
Appendix F: Setting up your Debug Xbox	32
Appendix G: Softmodding Tutorials.....	34
Hard Drive Upgrade using a Modchipped Xbox	34
Hard Drive Upgrade using a PC.....	35
Hotswap Tutorial - Recover a HDD without Eeprom Backup	36
Hard Drive Cloning using Chimp	37
Appendix H: What do all these Applications do?.....	38
Appendix I: Modifying the AID ISO with Addon Packs.....	41
Creating Addon Packs	41
Creating Skin Packs	42
Creating Romsets	42
Appendix J: Using USB Devices for SID	43
The USB -> Xbox Cable.....	43
Preparing the USB Device to use with Action Replay	43
Bibliography.....	47
Credits	48

Chapter 1: Introduction

Welcome to Auto-Installer Deluxe 4.53 Lite, the most complete and flexible installer there is for the Xbox console.

What makes this version different than the full version is that is a trimmed-down version which excludes some of the options to reduce space. For example, there is no Emulator or Rom installer, and the Anod-X and Avalaunch dashboards have been removed. However, you will still find all the necessary options and features that you need to set up your Xbox.

This installer has over 40 different applications and dashboards all in one easy-to-use interface. It has the option of installing all the applications and emulators bundled on the disc, or individually if you prefer. You can even install dashboards as normal applications if you want to experiment with a particular dashboard or simply you want it installed but not as your main dashboard.

There are also features like Phoenix BIOS Loader, which will allow you to enable a dual-boot system on your Xbox. You can either have it load different partitions and/or have a Debug BFM BIOS used so you can develop. Another great program included is XSelect, which will let you boot any program on startup of your Xbox, simply by pressing a button on startup when you see the XSelect message.

This is also by far the most covered installer as far as Softmods go as well. This features the option to either install the Softmod by itself, or by the simple One-Click Install system which is in place for both Softmodded and Modchipped boxes.

Over the four years that this program has spanned (2004 to 2007) it has always tried to maintain its dominance in the Auto-Installer category of Xbox Homebrew Software, and with the support that it has received over this time you could even say that it is the best Installer / Compilation DVD ever made for the Xbox.

This may be the final version, but full documentation has been included so that any Addon packs can be made to keep it up-to-date (new XBMC or other apps, new Skins).

With all that said, enjoy **THE** finest pieces of Xbox Homebrew History!!

The Auto-Installer Deluxe Team

Chapter 2: Features

Contents of the Auto-Installer

This installer boasts to have more installable features than any other installer. Here is a list of what's included in the package.

BIOS'

They come in 256k, 512k, and 1mb flavors (except for X3, the latest X2, SmartXX / XChanger, and the MS BIOSes which are set sizes).

Stealth = Boots F Partition before C.

Ejectfix = The DVD Tray will not reset the Xbox when opened.

137 GB+ = Support for G Partition. A must use if you have a 120 gb+ HDD.

SmartXX Update 3403

XChanger OS Update 2.2 and 2.5

FlashBIOS 3.03

EvoX M8

EvoX M8 Stealth 137 GB+

EvoX M8 v1.6

EvoX M8 1.6 Stealth 137 GB+

EvoX M8 Plus

EvoX M8 Plus Stealth 137 GB+

EvoX M8 Plus v1.6

EvoX M8 Plus v1.6 Stealth 137 GB+

Xecuter2 4981.06

Xecuter2 4981.06 Stealth + Ejectfix

Xecuter2 4981.67

Xecuter2 4981.67 Stealth + Ejectfix

Xecuter2 4983.06

Xecuter2 4983.67

Xecuter2 5032

Xecuter2 5032 137 GB+

Xecuter2 5032 v1.6

Xecuter2 5032 v1.6 137 GB+

Xecuter2 5035

Xecuter2 5035 137 GB+

Xecuter2 5035 v1.6

Xecuter2 5035 v1.6 137 GB+

Xecuter3 3294

Xecuter3 3294 v1.6

MS BIOS 3944 (1mb)

MS BIOS 4034 (1mb)

MS BIOS 4132 (1mb)

MS BIOS 4627 (1mb)

MS BIOS 4817 (256k)

MS BIOS 5101 (256k)

MS BIOS 5530 (1mb)

MS BIOS 5713 (1mb)

MS BIOS 5838 (256k)

MS Debug BIOS (1mb)

PBL BFM BIOSES

EvoX M8+ 1.6 Ejectfix

Complex Debug for Xboxes v1.0-v1.4 (evoxdash.xbe Boot)

Gueux Debug for Xboxes v1.5+ (evoxdash.xbe Boot)

SOFTMOD PACKAGESS

Softmod Installer Deluxe v5.01

DASHBOARDS

Install the Non-MS Dashboards to C, E, F, or G.

The Config files have been set up to search these setups:

E Drive - E+F Drive - E+F+G Drive

MS Dashboard 5960 Revision 185EAD00 (C Drive Only)

EvolutionX 1.8.3935

UnleashX 0.39.0528 Build 584

Xbox Media Center 2008-06-30

X-DSL (Xbox Damn Small Linux) v0.60 RC2 (Installs main part on E Drive)

APPLICATIONS

Install to E, F, or G either as a package or individually.

Bios Checker 5.0 Beta

BoXplorer 0.96

Chimp 2.6

ConfigMagic Final 1.6

Complex Tools 1.60 (Public Release)

Dvd2XboX 0.7.8

Enigmah NTSC-PAL Video Switcher

DVD-X 1.0 (Team Gueux version)

DVD-X 2.0 (Team Xecuter version)

Halo Cache Editor V0.7

LinksBoks 0.99

MouseTestApp

Mimesis 2

Phoenix BIOS Loader MeToo 1.4.1

ProjectX HDDLoader 1.3a

X2 Config Tool

X3 Eeprom Eraser

Xbox FTP client 0.62

Xbox Media Center 2008-06-30

Xbpartitioner 1.1

XBWatch 0.03

xCbr 0.1.1

XCommanderR2

X-DSL (Xbox Damn Small Linux) 0.60 RC2

XeniumTest

Xored Trainer Launcher 2.2

XToolbox 0.4.1

YAMP

Available Tools launchable through the Auto-Installer

BIOS Checker

Chimp 2.6

ConfigMagic Final v1.6

Enigmah NTSC-PAL Video Switcher

Xbpartitioner 1.1

Features of the Auto-Installer

Here is a list of features that the auto-installer covers:

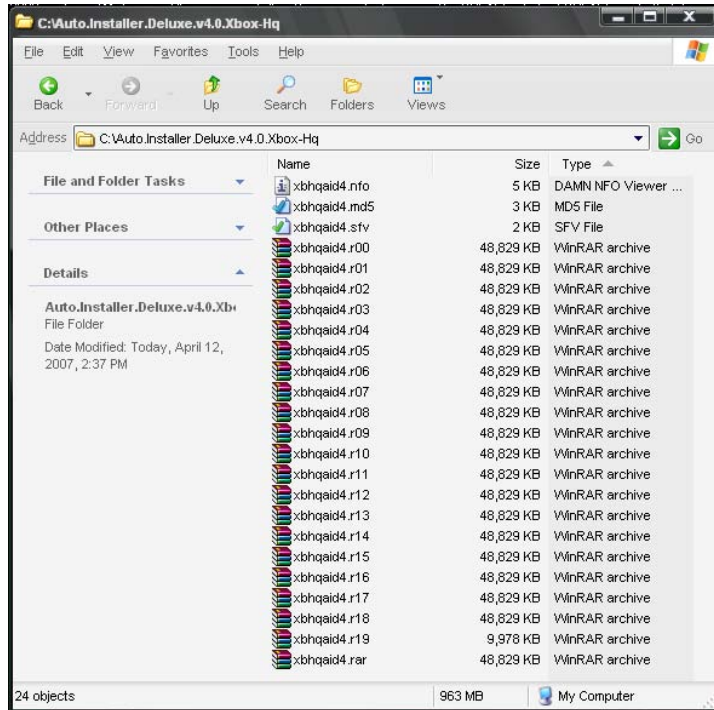
- Boots on a modded or soft-modded Xbox. Modchip users must be using a proper BIOS (**NOT** Cromwell/Linux) and Softmod users must have already installed their Softmod before attempting to launch this.
- Install Complete Softmod and MS Dash setups with either PBL or NKpatcher for the Softmod. Requires booting of Softmod Installer Deluxe first in order to use this (Xboxes with Modchips should not bother about this feature).
- Install Dashboards and Applications anywhere on your Xbox.
- File Manager built into the installer, for easy deleting / copying.
- Boot either the Microsoft Dashboard, or any Dashboard stored on C, E, F, or G Drive directly from the installer.
- Format / Prepare and now Backup your Partitions. The backups are neatly stored in a folder of your choice.
- Use XSelect to boot various Dashboards and Applications.
- Use PBL MeToo Edition to boot a BFM BIOS (great for if you have an old BIOS on a Modchip and you don't want to reflash). This comes in a single and dual mode, the dual mode using a Debug BIOS.

PLEASE NOTE: Only the BIOS is supplied as part of the Debug setup, so it is up to you to install the XDK on your PC, and put the correct files on your Xbox. Documentation about this can be found in Appendix F.

Chapter 3: Preparing the AID 4.53 disc on your PC

Extracting the AID 4.53 Archive

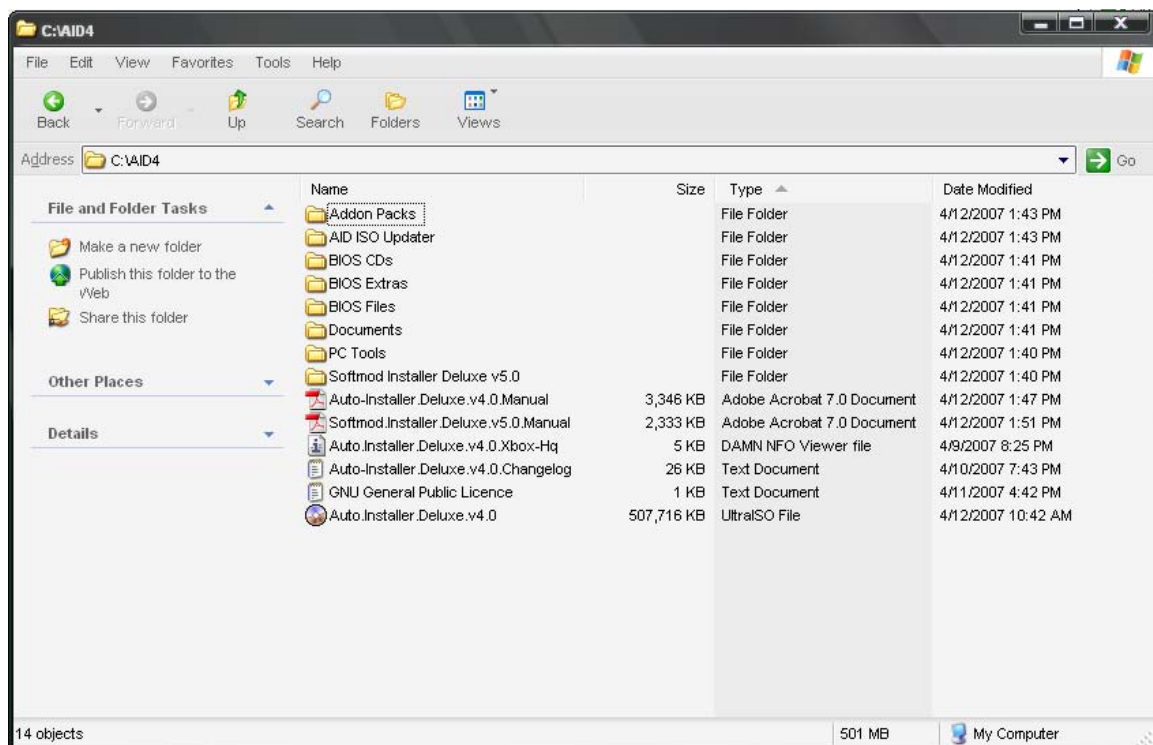
The first step is to unrar the archive that you have downloaded; to do this you will need a program such as 7-Zip or WinRAR to do so. **DO NOT** try and burn the RAR file on to a CD / DVD as it will not work.



This is a screenshot of all the files you should have (please note that this screenshot will be a little different as the final release will have more rar files).

To extract the archive, right-click on the xbhqaidd4.rar file, and use your program of choice (whether it be 7-Zip or WinRAR) to extract the archive. When it's extracted, you will see a folder called

Auto.Installer.Deluxe.v4.53.Lite.Xbox-Hq. A screenshot below shows the contents of the archive.



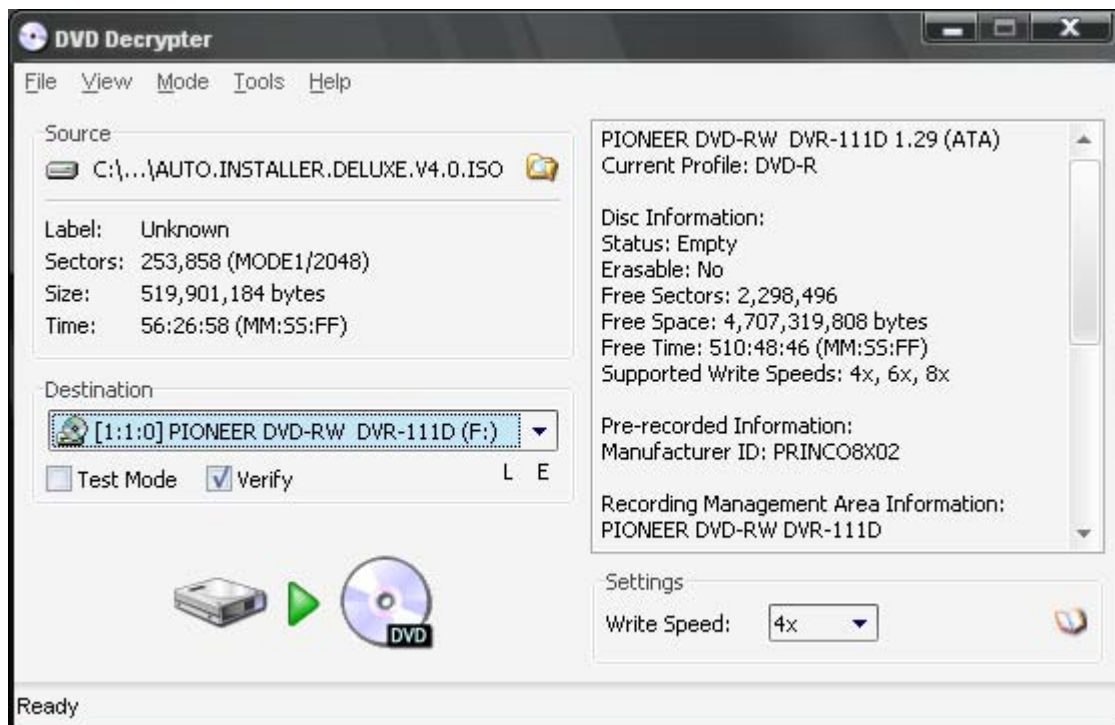
Chapter 4: Burning the ISO with DVD Decrypter

This is how to burn the ISO file with DVD Decrypter. Before proceeding, make sure you have an updated version of DVD Decrypter (3.5.1.0 or higher).

This program is considered Freeware so it is distributed with this package. You can find DVD Decrypter v3.5.4.53 in the **Tools** folder.

Firstly, open DVD Decrypter, then press the **W** button. This is a shortcut to the ISO Writing Screen. Alternatively you can go to **Tools**, Select **ISO**, and then **Write** on the submenu box that the menu pops up. When this screen appears you can either browse for your ISO file, or just drag and drop it into the window. Now, before proceeding (which is click on the HDD to DVD icon) make sure you have the verify box ticked and the Write Speed set at a low speed, to ensure that is burned properly.

Once this is all done you can proceed to burn your CD-RW / DVD. If you start receiving write errors while burning, try a lower writing speed.



Chapter 5: The Main menu for AID 4.53

Here's the first glimpse of the main menu:



This is a screenshot of the Full Version. In the Lite Version you will not have the **Emulator Section** and **Rom Installer Selection** available.

The **Tools** section is now incorporated into the **Advanced Options** menu.

The **Backup / Restore HDD** section is where you can make a backup (or restore a previous backup) of a drive to another drive, for example making a backup of C Drive on E or F. It will also create a MS Backup from the AID disc and backup your Eeprom.

The **Format / Prepare HDD** section is where you can format your Xbox's Hard Drive, and also prepare it with the folders it requires on your E, F, or G Drives.

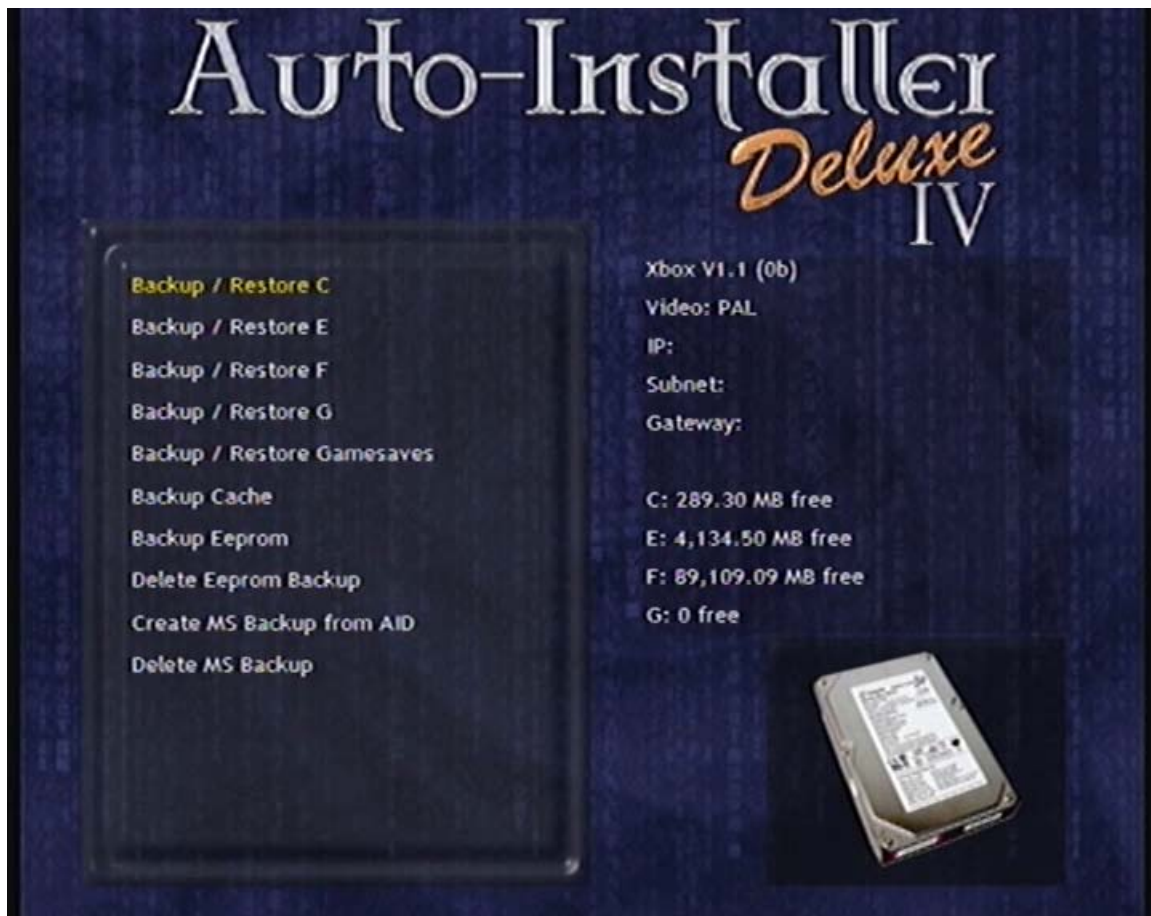
The **One-Click Installs** section is designed to install a dashboard of your choice, and the basic programs required (Dvd2Xbox, DVD-X, Enigmah NTSC-PAL, and XBMC). This has been set up for Modchip users, and also two Softmod versions (SID 3.1 and SID 4.5). The Softmod versions will completely re-install the Softmod in the process.

The **Softmod Section** is basically an identical copy of Softmod Installer Deluxe 3.1 Final and Softmod Installer Deluxe 4, doing this will hopefully make it a bit easier to understand when using both AID and SID systems.

Pressing the **Y** button at most menus will give you detailed information about your Xbox, this can sometimes come in handy (another wonderful UnleashX option).

Chapter 6: Preparing your Xbox Hard Drive

Backup / Restore your Hard Drive



This feature had to be completely re-written from scratch for this version, due to it be very buggy and basically non-working in version 2. Instead of trying to zip the backups, it will just copy them to your location. Tests proved that using the zip option took way too long and made the soundtrack very jumpy.

Here's the locations of where the backups are put on your HDD, they are on G Drive in the example:

G:\Backup\C\	← C Drive Backup
G:\Backup\E\	← E Drive Backup
G:\Backup\F\	← F Drive Backup
G:\Backup\G\	← G Drive Backup
G:\Backup\Cache\	← Cache Backup (X, Y, and Z Drives)
G:\Backup\Gamesaves\	← Gamesaves Backup

Format / Prepare your Hard Drive



If you have a virgin HDD (meaning you've just bought it and it's not formatted), Auto-Installer Deluxe v4.53 can automatically format the drive for you (thanks to the wonders of the UnleashX system which powers Auto-Installer Deluxe). Although, there might be times where it might not format your F and G Partitions properly. Go to the **Format / Prepare HDD** option and format the drives again after you've done a reboot on the initial format.

If your HDD is already set up, you can use this to completely wipe a partition clean. However, if you are only upgrading your apps etc (for argument's sake let's say they are on D Drive) it would be wiser to use the File Manager and delete files and folders you don't want. This way there is no risk in formatting the partition and losing games, emulators etc.

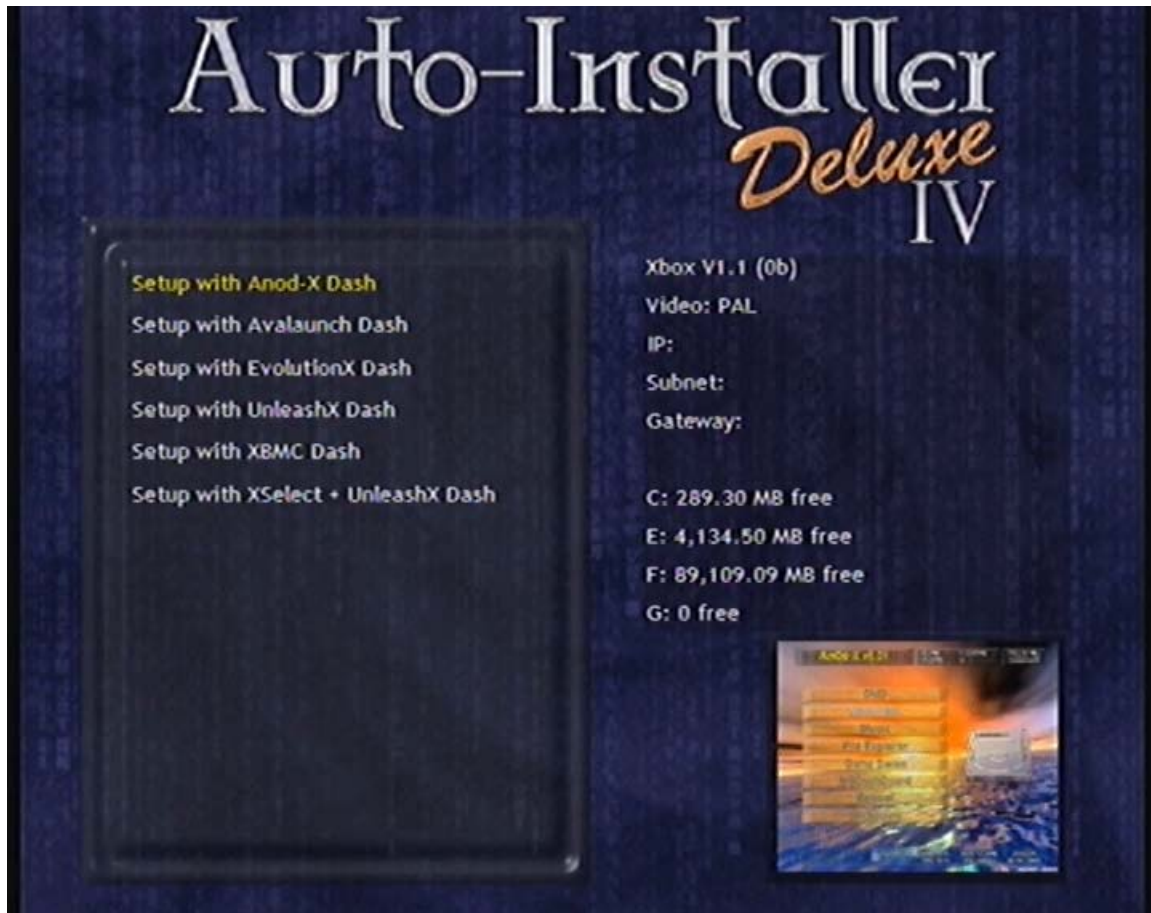
There is also an option called **Prepare <X> Drive**, which will prepare your selected partition with the necessary folders that are needed, like your Apps folder, your Games folder, your Music folder, and your Videos folder.

Chapter 7: One-Click Installs

The One-Click Install system is designed for people that want to get your Xbox set up properly, or some people that are new to Modding and wish to use the easiest method possible of setting your Xbox up with a Dashboard and apps.

These installations come standard with MS Dash, DVD-X (for DVD Playback), Enigmah NTSC-PAL (for change video regions), DVD2Xbox (to backup DVDs to the HDD), and Xbox Media Center (to play all your media content).

Modchip Users



Your options are simple; you have the following to choose from:

- Install EvolutionX Dashboard
- Install UnleashX Dashboard
- Install XBMC Dashboard
- Install XSelect + UnleashX Dashboard

After you've selected what you want to install, the installer will go ahead and set it all up for you.

Softmod Users



There are several options available here:

- **Single Boot with no Virtual C**
This is only recommend for people who don't want the extra security of the Virtual C Drive and Eeprom.
- **Single Boot with Virtual C**
Recommended for most and novice users.
- **Dual Boot with Softmod Menu on Open Tray**
Recommended for more intermediate / advanced users.
- **Dual Boot with MS Dash on Open Tray**
Recommended for advanced users only, as the Xbox Live account must be set up before the Softmod is installed.

Once you have select one of these options, the program will proceed so you can select the Dashboard you wish to install, like the Modchip users section.

Chapter 8: Installing Dashboards

Installing the Microsoft Dashboard



Go to the **Dashboards Section** and select the MS Dash from there. It's a good idea that you format C drive before installing the MS Dash; this ensures a clean install of it.

Just remember if you have a Softmod or Hacked Dash installed on C Drive that you **MUST** install it again before turning off your Xbox, since the Xbox's C Drive has been formatted (**VERY IMPORTANT FOR SOFTMOD USERS!!**)

Installing a Hacked Dashboard

When installing your choice of dashboard you will notice there are a few options. Firstly you select which drive you want to install your dashboard to (along with if you want DHCP or not), then you select the dashboard you want. After this you are given these 3 options:

Retail HDD (E) - Large HDD (E+F) - Larger HDD (E+F+G)

Basically the Retail HDD is the standard 8-10 GB drive that comes with your Xbox, the Large HDD is a replacement drive up to 120 GB, and the Larger HDD is over 120 GB.

When installing a dash on a Softmodded Xbox, make sure you use the dashboards in the **Install Dashboard (Softmod)** as they are set up to work with the Softmodded MS dash. If you use a dashboard configured for a Modchip, you will realize that you won't be able to boot the MS Dash again.

IMPORTANT NOTE: If you are using the SID 5 system with the Virtual C + Eeprom, install a normal dashboard to E Drive, not a Softmod one. Due to the way SID 5 is set up it won't work any other way.

Chapter 9: Installing Applications



Go to the **Install Applications** section, then select a drive to install to (usually this is E Drive for a Retail HDD and F for large HDDs).

You will notice you have the option to install all the hacked dashboards as apps, which I personally do and just run XSelect to boot them. There is also the option to install all the applications in one click, personally I don't use this as there are only a small handful of apps that I use but I'm sure there are people out there that do.

Chapter 10: The Softmod Section



This is the first screen you see which displays your options. Just a quick note, make sure you don't forget to install SID in the **Advanced Options** section if you wish to boot the Gamesave via the original game, that's if you haven't already installed it.

Single Boot Softmod Options

These are the single-boot options available to you:

- Standard
- Standard for HD
- Virtual C + Eeprom
- Virtual C + Eeprom for HD

You'll notice that you have two new options compared to the One-Click Install System. Installing the Softmod for HD (High Definition) means that your Softmod will be set so your Xbox is best displayed with a High Definition TV.

You only get the options to install EvolutionX or UnleashX in this section, but you can easily go back to the **Install Dashboards** section and change it (to XBMC for example).

One small rule, when installing a Softmod with Virtual C, don't select a Softmod Dashboard, because the Softmod tricks your Xbox into thinking that the C Drive is still stock (unmodded), so in order to access the MS Dash properly you need to remember this.

Dual Boot Softmod Options

Unlike the Single-Boot Softmod, the Dual-Boot offers much more flexibility.

The two options you have are:

- Hacked Dash / Softmod Menu
- Hacked Dash / MS Dash

You firstly have the option on how you want to control your Dual Boot. After selecting this, you will proceed to the same options as the Single Boot.

Please note when you use the **Hacked Dash / Softmod Menu** option, when you boot your Xbox in this state, any Virtual C Drive is turned OFF leaving it exposed. You may not want to use this option if there's a possibility that your Xbox can be used by someone that could easily format it on you.

The **Hacked Dash / MS Dash** option allows you to use Xbox Live properly (only with Original Games though). For this to work correctly, you must have your Xbox unmodded to set up your Xbox Live Account. Once this is done, you can proceed to apply the Softmod to your Xbox.

Unmounting the Virtual C Drive

This option comes in handy when you want to re-install your Xbox's C Drive, but you are currently using a Virtual C Drive. Not every Softmod has this feature, but at least this way you are 100% sure that there isn't one running in the background.

Removing the SID Softmod from your Xbox

This removal method is the same used in SID 5, so in order for this to work correctly you must make sure you have a proper backup of the MS Dash on E Drive. If you don't have this, Auto-Installer Deluxe can easily do this for you; just remember to do so before using the removal tool.

Chapter 11: The Advanced Options / Tools Section



Installing AID 4.53 to HDD

This option gives you the chance to install the entire AID 4.53 to your HDD in E:\Apps\AID3, F:\Apps\AID3, or G:\Apps\AID4.

Please note just copying the DVD to your HDD will not work due to the way the Auto-Installer script has been written, hence you need to actually install it through here.

Phoenix BIOS Loader (PBL)

What this does is boot a BIOS file from your Hard Drive, instead of completely using the BIOS on a Modchip. This is good if you have an outdated BIOS that doesn't have the greatest support for IGR (In-Game Reset) like mine does.

The BIOS included in this package is the EvoX M8+, and I've pre-configured it so it has the Eject Fix and LBA48 (larger hard drives over 120 gigabytes) support.

I've made several versions that will allow the Xbox to boot different drives. So, basically the BIOS will boot the first drive (being the first letter after EvoX M8+), then if it doesn't find nothing there it will check E, then check F.

The BIOS searches for an evoxdash.xbe file, so if your dashboard isn't called this, you will have to change it. Here's a list of the BIOSes that are included:

EvoX M8+ C, E, G
EvoX M8+ C, F, G
EvoX M8+ E, F, G
EvoX M8+ F, E, C
EvoX M8+ G, F, E

There's also a dual-boot option which will allow you to use a second BIOS when you have your DVD tray open. I have set this to be a Debug (development) BIOS, as I feel it could be handy to a few people.

Even though I have included the Debug BIOS, you will still need to obtain the Xbox Development Kit (XDK) to finalize the installation of your debug setup. More information given in **Appendix F** on how to set this up. If you wish to use the Debug BIOS as your main, just simply rename xboxrom.bin to xboxrom3.bin (just temporarily), rename xboxrom2.bin to xboxrom.bin, and then rename xboxrom3.bin to xboxrom2.bin. Next time you boot, the debug will be default.

Installing SID 5 to HDD or Memory Card

This option can be used either to set up an Xbox HDD for an unmodded Xbox, or to install it directly to your memory card or USB device (such as a Mega X-Key).

The Gameshark version is included in the package; however it's not on the installer.

XSelect

This program is great for people that would like to launch a particular application, emulator, dashboard etc. on startup of their Xbox. Even though XSelect does take a little bit of configuring before you have it set the way you want, it's not too complicated and be done quite quickly.

One small tip though, when setting the search parameters to look for files, make sure you clear the existing list and make it only search for *.xbe files, otherwise you'll end up with hundreds of possibilities.

The best way to install this is to put it on the drive which is first booted by your BIOS (usually C, but sometimes it can be F). If you need to install a dashboard to the same drive as well, do that first. Then, rename the evoxdash.xbe file to something like evoxdash2.xbe, so that you can install XSelect without any problems. The good thing about XSelect is it will boot any file you want; all you have to do is set up a button to launch it.

BIOS Checker

This tool can be used to check what BIOS is running from either your Modchip or TSOP. It can report back on the size of the chip, the bios, and what kind of chip it is (not the Modchip brand like Xecuter etc, the actual brand of the flashable chip).

The data that the MD5 check uses is the same as what's in EvoX and Media X Menu for this release, and up to date including the X2 5032 BIOS.

BIOS Flasher

This is an option which will boot to the EvoX system, in order for you to flash a TSOP or BIOS. **PLEASE ONLY DO THIS IF YOU KNOW WHAT YOU ARE DOING!!!**

Chimp

This is a Linux tool that allows you to upgrade your Xbox HD in place by hotplug a second HD after you have booted Xbox.

ConfigMagic

This tool is used to backup and restore your Xbox's Eeprom, and can also be used to view information such as your Xbox Region, HDD Key / Brand, DVD Drive information etc. It's mainly used for changing Eeproms if you've been banned from Xbox Live. It will pull your Eeprom from your Xbox, or another Xbox, so that you can transfer it to another Xbox.

There is a SWF tutorial included in the AID 4 package which shows you how to use it in order to change Eeproms.

Enigmah NTSC-PAL Video Switcher

This program can be used to change the Video Setting on your Xbox to either PAL or NTSC. This does not damage your Eeprom or anything and is completely safe to use.

Some good examples on when this should be used are when you're playing a game from a different region (for example, PAL users wanting to play a NTSC game). However, this is not needed to view different region DVDs, as the DVD players have built in multi-region capabilities.

Xbpartitioner

This program can be used to repartition your Xbox. There is documentation included in the package on how to use it (you can find this in Docs\Applications), but honestly should only be used at a last resort I feel, as normal formatting and partitioning are fine for most users.

Appendix A: Xbox Error Codes

Error	Cause	Description
01	Bootloader	Motherboard Error
02	Bootloader	Eeprom Check Failed When you see this error most of the times you have flashed something wrong. Or you dropped solder on your eeprom chips.
03	Bootloader	Unknown
04	Bootloader	RAM Check Failed Your Xbox ram chips are possibly damaged. Maybe you dropped a little solder on it (try to remove it CAREFULLY!). Note, if they are fried, removing solder won't fix them). Maybe you were static when you touched the ram chips. They are kind off sensitive. If they are, they are fried, sell your Xbox for spare parts.
05	Kernel	HDD not locked (retail BIOSes require the HDD to be locked) When you upgrade your hard disk drive for one that is larger, you most of the times use a new hard drive that you bought in the shop. Now, when you put this HDD in your Xbox and you try to boot up with your chip off. It gives you error 5. The original (also called "Retail") hard drive is locked by MS. This locking process uses information thats on the motherboard. The "Lock" on a Xbox hard drive contains information that is based on the hard drive itself and the motherboard it came with One thing that makes this clear: You can not change a retail har drive with another one from an other not modded Xbox. With every Xbox there is only ONE compatible hard disk drive. That is if they are locked. If you don't mod your Xbox (TSOP or modchips) you can not change hard drives. Not even from another Xbox. However wher your Xbox IS modified you can change your hard disk for almost every other hard disk (thats UNLOCKED). This means that even when your Xbox is modified, you can not just put another (retail Xbox hard disk in your Xbox. However some smart people made programs that can lock or unlock your Xbox hard disk on the fly. So when does the error occur? The only time this error should occur is when you boot up your Xbox in original mode AND you have a hard disk in your Xbox that is not yet locked. So now you ask what do i have to do to make your Xbox work again? Boot up your Xbox with the chip on. Preferably with AID / XBMCID. Lock your Xbox using ConfigMagic. Disable your chip and try to boot in original mode. Now there should be no more error 5.

-
- | | | |
|----|-----------------------|---|
| 06 | Kernel | Cannot unlock HDD |
| | | <p>If you understand the above, you should be able to understand what this means. It means you are trying to boot up the Xbox with a hard disk that is locked in combination with ANOTHER motherboard than you are using it with right now.</p> <p>What can I do about it, you ask? Well place the hard disk back in the xbox where it came from. After that, UNLOCK the hard disk with the same procedure explained above (see error 5). Now when the hard disk is UNLOCKED, put it in the Xbox which gave you the error. Now when you boot up with the chip ON it should not give you an error anymore.</p> <p>However when you put the Xbox on with the chip OFF your Xbox will give you an error. (error 5) So to make sure you can boot original and boot with the chip ON. Next do the same as above: "Boot up your Xbox with the chip on. Preferably with AID / XBMCID. Lock your Xbox using ConfigMagic. Disable your chip and try to boot original. Now there should be no more error.</p> |
| 06 | Kernel
(continued) | |
| 07 | Kernel | HDD Timeout |
| | | <p>Most of the times, the IDE cable is not properly connected when you see this error. Please reattach the IDE cable. Not only to the hard disk drive but also to the DVD drive. Also try to reconnect the IDE cable to the motherboard.</p> <p>Press pretty hard so it goes all the way in. Make sure it is seated straight and proper in the drives and the motherboard. If you still have an error 7. Try another IDE cable. If that won't work try another hard disk. If there is still no go, try to set the jumpers on the rear side of the hard disk drive. Set it to master or cable select. If still no success, good luck.</p> |
| 08 | Kernel | HDD not found |
| | | <p>Please make sure your Xbox hard drive is attached properly. Most of the times the IDE cable came loose, or isn't seated properly in the IDE port of your hard disk. Also make sure the power supply cables are intact and working.</p> <p>Make sure the IDE cable is also connected properly to the rest of the hardware (DVD and motherboard).</p> |
| 09 | Kernel | HDD parameters (PIO/DMA/or size {debug}, certain size minimum is required for debug) |
| | | <p>Not very common error, please try another hard disk.</p> |
| 10 | Kernel | DVD drive timeout |
| | | <p>Actually its almost the same as error 6/7/8. But also make sure the yellow cables are properly connected to the motherboard and the dvd drive.</p> <ol style="list-style-type: none">1. Make sure IDE cables are connected well.2. Make sure the yellow cables are good and properly connected |

		3. Still no success? Try another DVD drive of which you are sure it is working.
11	Kernel	DVD not found Same as Error 10.
12	Kernel	DVD parameters (PIO/DMA) Same as Error 10, only not as common.
13	Kernel	<p>Dashboard launch fail (due to missing/bad key, or anything else that would prevent it from running) and the dashboard didn't specify why it failed</p> <p>The error it gives is because of the incompatibility between the (older) dashboard (4920) that older Slayer CD installs and the new dashboard/kernel versions found in some new Xbox's and found in Xbox's that have been connected to Xbox live (when you go on Xbox live, it'll upgrade your dashboard file to i believe it is now 5659.03 (the same version as Auto-Installer Deluxe and XBMC Installer Deluxe). This dashboard is incompatible with the dash that (old) slayer CD installs (for example 2.5 or lower) for you.</p> <p>(In Detail, in the eeprom chip there is a kernel which is incompatible with the dashboard (4920) that slayer installs.)</p> <p>So what do you do to fix it? You can use the dashupdate found on most new Xbox games! Be sure to 1st unplug your Ethernet cable before you do so!!!</p> <p>Besides that, just use AID or XBMCID and all will be fine.</p>
14	Dashboard	<p>Error loading dashboard (dashboard generic error)</p> <p>Same thing as above (error 13). This time it is also a little mistake from you on changing names or having played around with files on the Xbox hard disk. Error 14 is most often because you changed boot orders or names of startup files on the hard disk. It can also happen when you are rebuilding your Xbox hard disk with a installer CD and the power was cut.</p>
15	Kernel	Unknown
16	Dashboard	<p>Other files to do with dashboard / dashboard settings (specific dashboard error)</p> <p>Basically it comes down to this. Error 16 has to do with not finding the menu setting with which you can set the clock of the HDD. This happens to a lot of people that erase their HDD (original/upgraded) or MS dashboard files and after that they don't immediately install the HDD but leave the Xbox without power longer than 5 hours.</p> <p>It's all about the HDD can't find the menu with which it can set the clock. This is mostly because the Xbox HDD is empty (you removed dashboard or messed it up via FTP). The problem arises when Xbox searches for menu to set clock with, can't find it and voila: error 16. Well read on please!</p>

So you have an error 16 huh? Don't worry "nothing" is broken!

You have an Xbox HDD that is locked. And normally you can boot in original and modded mode. Retail or upgraded doesn't matter. You start playing around with xboxdash.xbe etc. using ftp programs. While doing this you "accidentally" remove your MS dashboard and also your alternate dashboard (Evbox, etc.) so there is no dash anymore on the xbox hdd.

You end the ftp session and after that you shut off your Xbox. Normally when you would start up again it gives you an error 13/14 (no dashboard found). No worries with a installer CD (an a hardmod), all is ok. BUT this is only WITHIN 3 hours or so.

This is because the internal clock of the Xbox will only be kept alive by the capacitors for only 3 or 4 hours. So when you leave your Xbox unplugged from electricity for over 5 hours after you have played with the .xbe's AND you have removed your (ms and evo-x) dash from your Xbox then you are fux0red. Why do you ask?

Why can't I boot from disc?

It's as follows: Xbox starts booting ==> (almost 1st thing a Xbox does is) searches for internal clock ==> doesn't find internal clock because there hasn't been any electricity on the Xbox for 5 hours so battery that kept clock alive is empty and clock is gone ==> searches for the proper dashboard menu to set clock with ==> doesn't find MS dashboard or evo-x dashboard menu because you have removed it from the HDD for whatever reasons you had ==> xbox gives error 16: cannot set clock.

So what do you do about it? Two options!

1. There are some bios'es around that allow the chip to boot past the clocksetting. (do a search!). So how do you get that bios on your chip because you can't boot to a flash program or something? Well you need to have an external flasher.

16 Dashboard
(continued)

It seems the m8 bios will take care for you of booting past the clocksetting. Or use the latest Xecutor bios

2. This is the more easy and newbie friendly strategy

- Get a friend with a modded Xbox.
- Unlock his HDD with eeprom management from AID or XBMCID.
- Then, place his HDD in your Xbox.
- Boot with your chip on.
- Now the Xbox DOES find a dashboard when you boot in original mode and you can set the time in the MS dashboard clock settings.
- Shut off Xbox and remove your friend's HDD
- Place his HDD back in his Xbox and lock it again
- Install your HDD
- (clock has been set) So boot up with AID / XBMCID.
- Install normally whatever you want to install
- lock HDD

		If you get an error 13 after this, please read up on the error 13 explanation!
17	Kernel	Unknown
18	Kernel	Unknown
19	Kernel	Unknown
20	Kernel	<p>The Dashboard has attempted to load and failed</p> <p>It was a cold boot, and the dashboard didn't specify why it failed but it (for some reason) needed to be noted that the DVD passed the challenge/response authentication</p>
21	Anywhere	<p>This error says that the machine was booted to display a error, basically someone told the machine to reboot (or launch a xbe) with this flag, and the error code just means its been rebooted by the flag.</p> <p>This occurs frequently when the Xbox is unable to boot due to dashboard changes being made (ie Gcue true blue hasnt been resigned, parts of the stock dash are missing - incomplete FTP backups copied to a new HDD for example).</p>

Appendix B: Xbox Media Compatibility

Here is a table showing how compatible the various DVD Drives are. This information was taken from www.xbox-linux.org.

	Thomson Untweaked	Thomson Tweaked	Phillips Untweaked	Phillips Tweaked	Samsung 605 Rev.B	Samsung 605 Rev.F
CD-R						
CD-RW						
DVD-R						
DVD-RW						
DVD+R						
DVD+RW						

Key:	Description
	Doesn't work with most Media
	Works with some Media
	Works with most Media

Appendix C: Xbox DVD Drive Identification

These pictures were taken from Xbox-Linux.org, and show how you can easily identify your drive by looking at the tray. Here are the three different types of Drives, and what their trays look like:



Appendix D: Menu Structure

This shows the menu structure of the Auto-Installer, the text in **bold** represents a sub-section in this menu.

Backup / Restore HDD

Backup / Restore C

- Backup to E:\Backup\
- Backup to F:\Backup\
- Backup to G:\Backup\
- Restore from ...
- Delete from...

Backup / Restore E

- Backup to F:\Backup\
- Backup to G:\Backup\
- Restore from ...
- Delete from...

Backup / Restore F

- Backup to E:\Backup\
- Backup to G:\Backup\
- Restore from ...
- Delete from...

Backup / Restore G

- Backup to E:\Backup\
- Backup to F:\Backup\
- Restore from ...
- Delete from...

Backup Cache

- Backup to E:\Backup\
- Backup to F:\Backup\
- Backup to G:\Backup\
- Delete from...

Backup / Restore Gamesaves

- Backup to E:\Backup\
- Backup to F:\Backup\
- Backup to G:\Backup\
- Restore from ...
- Delete from...

- Backup Eeprom

- Delete Eeprom Backup

- Create MS Backup from AID

- Delete MS Backup

Format / Prepare HDD

- Format Retail HDD

- Format Large HDD

- Format Cache Drives (X, Y, and Z)

- Format C Drive

- Format E Drive

- Format F Drive

- Format G Drive

- Prepare E Drive

- Prepare F Drive

- Prepare G Drive

Modchip One-Click Installs

- Setup with EvolutionX Dash

- Setup with UnleashX Dash

- Setup with XBMC Dash

- Setup with XSelect + UnleashX Dash

Softmod One-Click Installs**Single Boot no Virtual C**

...same as above

Single Boot with Virtual C

...same as above

Dual Boot Gamesave with Virtual C

...same as above

Dual Boot MS Dash with Virtual C

...same as above

Dashboard Section

Install MS Dash 5960

Install C Drive Dashboards**Install EvolutionX**

Retail HDD (E)

Large HDD (E+F)

Larger HDD (E+F+G)

Install UnleashX

Retail HDD (E)

Large HDD (E+F)

Larger HDD (E+F+G)

Install Xbox Media Center

Retail HDD (E)

Large HDD (E+F)

Larger HDD (E+F+G)

Install X-DSL

Install E Drive Dashboards

...same as above

Install F Drive Dashboards**Install EvolutionX**

Large HDD (E+F)

Larger HDD (E+F+G)

Install UnleashX

Large HDD (E+F)

Larger HDD (E+F+G)

Install Xbox Media Center

Large HDD (E+F)

Larger HDD (E+F+G)

Install X-DSL

Install G Drive Dashboards**Install EvolutionX**

Larger HDD (E+F+G)

Install UnleashX

Larger HDD (E+F+G)

Install Xbox Media Center

Larger HDD (E+F+G)

Install X-DSL

Install C Drive Dashboards (Softmod)

...same as above

Install E Drive Dashboards (Softmod)

...same as above

Install F Drive Dashboards (Softmod)

...same as above

Install G Drive Dashboards (Softmod)

...same as above

Uninstall C Drive Dashboards

Uninstall Anod-X

Uninstall Avalaunch

Uninstall EvolutionX

Uninstall UnleashX

Uninstall Xbox Media Center

Uninstall E Drive Dashboards

...same as above

Uninstall F Drive Dashboards

...same as above

Uninstall G Drive Dashboards

...same as above

Install Applications**Install to E Drive**

- Install Dashboards
- Install Dashboards (Softmod)
- Install All Applications
- Install BiosCheck
- Install BoXplorer
- Install ConfigMagic
- Install Complex Tools
- Install Dvd2XboX
- Install DVD-X 1.0 (Gueux)
- Install DVD-X 2.0 (Xecuter)
- Install Enigmah NTSC-PAL
- Install Halo Cache Editor
- Install HDDLoader
- Install LinksBoks
- Install Mimesis
- Install MouseTestApp
- Install PBL MeToo
- Install X2 Config Tool
- Install X3 Eeprom Eraser
- Install xCbr
- Install XBFTP
- Install Xbox Media Center
- Install Xbpartitioner
- Install XBWatch
- Install XCommanderR2
- Install X-DSL
- Install XeniumTest
- Install Xored Trainer Launcher
- Install XToolbox
- Install YAMP

Install to F Drive

...same as above

Install to G Drive

...same as above

Uninstall Applications**Uninstall From E Drive**

- Uninstall All Applications
- Uninstall BiosCheck
- Uninstall BoXplorer
- Uninstall ConfigMagic
- Uninstall Complex Tools
- Uninstall Dvd2XboX
- Uninstall DVD-X 1.0 (Gueux)
- Uninstall DVD-X 2.0 (Xecuter)
- Uninstall Enigmah NTSC-PAL
- Uninstall Halo Cache Editor
- Uninstall HDDLoader
- Uninstall LinksBoks
- Uninstall Mimesis
- Uninstall MouseTestApp
- Uninstall PBL MeToo
- Uninstall X2 Config Tool
- Uninstall X3 Eeprom Eraser
- Uninstall xCbr
- Uninstall XBFTP
- Uninstall Xbox Media Center
- Uninstall Xbpartitioner
- Uninstall XBWatch
- Uninstall XCommanderR2
- Uninstall X-DSL
- Uninstall XeniumTest
- Uninstall Xored Trainer Launcher
- Uninstall XToolbox
- Uninstall YAMP

Uninstall from F Drive

...same as above

Uninstall from G Drive

...same as above

Softmod Options**Install Single Boot Softmod****Standard**

Install Anod-X Dashboard
 Install Avalaunch Dashboard
 Install EvolutionX Dashboard
 Install UnleashX Dashboard
 Install XBMC Dashboard
 Install X-DSL Dashboard

Standard for HD

...same as above

Virtual C + Eeprom

...same as above

Virtual C + Eeprom for HD

...same as above

Install Dual Boot Softmod**Hacked Dash / Softmod Menu****Standard**

...same as above

Standard for HD

...same as above

Virtual C + Eeprom

...same as above

Virtual C + Eeprom for HD

...same as above

Hacked Dash / MS Dash**Virtual C + Eeprom**

...same as above

Virtual C + Eeprom for HD

...same as above

Unmount Virtual C Drive

Remove Softmod

Advanced Options / Tools**Install AID 4.53 to HDD** (Changes from Install to Remove once installed to HDD)

Install to E Drive

Install to F Drive

Install to G Drive

Install PBL MeToo**Install PBL**

Install to C Drive

Install to E Drive

Install to F Drive

Install to G Drive

Install PBL Dual-Boot

Install to C Drive

Install to E Drive

Install to F Drive

Install to G Drive

Install BFM BIOS #1**Boot MS Dashboard**

Install to C Drive

Install to E Drive

Install to F Drive

Install to G Drive

EvoX M8+ C, E, G

Install to E Drive

Install to F Drive

Install to G Drive

EvoX M8+ C, F, G

Install to E Drive

Install to F Drive

Install to G Drive

EvoX M8+ E, F, G

Install to C Drive

Install to F Drive

Install to G Drive

EvoX M8+ F, E, C

Install to C Drive

Install to E Drive

Install to G Drive

EvoX M8+ G, F, E

Install to C Drive

Install to E Drive

Install to F Drive

Complex Debug (Xbox 1.0-1.4)

Install to C Drive

Install to E Drive

Install to F Drive

Install to G Drive

Gueux Debug (Xbox 1.5+)

Install to C Drive

Install to E Drive

Install to F Drive

Install to G Drive

Install BFM BIOS #2

...same as above

Remove PBL

Remove from C Drive

Remove from E Drive

Remove from F Drive

Remove from G Drive

Install SID 5

007 Agent under Fire

Install to HDD

Install to Memory Card 1A

Install to Memory Card 1B

Install to Memory Card 2A

Install to Memory Card 2B

Install to Memory Card 3A

Install to Memory Card 3B

Install to Memory Card 4A

Install to Memory Card 4B

MechAssault

...same as above

Splinter Cell (NTSC)

...same as above

Splinter Cell (PAL)

...same as above

Install / Remove XSelect

Install to C Drive

Install to E Drive

Install to F Drive

Install to G Drive

Remove from C Drive

Remove from E Drive

Remove from F Drive

Remove from G Drive

BIOS Checker

BIOS Flasher (when using the BIOS Addon Pack)

Boot Dashboards

Boot Microsoft Dashboard

Boot Microsoft Dashboard (Softmod)

Boot C Drive Dashboard

Boot E Drive Dashboard

Boot F Drive Dashboard

Boot G Drive Dashboard

Chimp

ConfigMagic

DVD Tray Open

DVD Tray Close

MS Dash DVD RegionFree On

MS Dash DVD RegionFree Off

NTSC-PAL Video Changer

Reset FTP

Reset Network

Xbpartitioner

File Manager

Restart Xbox

Turn off Xbox

Appendix E: File Locations on the ISO

Here are all the files on the ISO which can be changed, in order to make the installer more suited to your needs. As you can see, they are all in normal plain ZIP format, so basically extract the ZIP file and edit as needed.

Config Files for Applications

/Config/Apps/E/xbmc.zip
/Config/Apps/F/xbmc.zip
/Config/Apps/G/xbmc.zip

Config Files for Dashboards

/Config/Dash/AvaLaunch/e.zip
/Config/Dash/AvaLaunch/f.zip
/Config/Dash/AvaLaunch/g.zip
/Config/Dash/EvoX3921/e.zip
/Config/Dash/EvoX3921/f.zip
/Config/Dash/EvoX3921/g.zip
/Config/Dash/EvoX3935/e.zip
/Config/Dash/EvoX3935/f.zip
/Config/Dash/EvoX3935/g.zip
/Config/Dash/UnleashX/e.zip
/Config/Dash/UnleashX/f.zip
/Config/Dash/UnleashX/g.zip
/Config/Dash/XBMC/e.zip
/Config/Dash/XBMC/f.zip
/Config/Dash/XBMC/g.zip

Config Files for Softmod Dashboards

/Config/Softmod/Dash/AvaLaunch/e.zip
/Config/Softmod/Dash/AvaLaunch/f.zip
/Config/Softmod/Dash/AvaLaunch/g.zip
/Config/Softmod/Dash/EvoX3921/e.zip
/Config/Softmod/Dash/EvoX3921/f.zip
/Config/Softmod/Dash/EvoX3921/g.zip
/Config/Softmod/Dash/EvoX3935/e.zip
/Config/Softmod/Dash/EvoX3935/f.zip
/Config/Softmod/Dash/EvoX3935/g.zip
/Config/Softmod/Dash/UnleashX/e.zip
/Config/Softmod/Dash/UnleashX/f.zip
/Config/Softmod/Dash/UnleashX/g.zip

Dashboard Files

Application Files

Emulator Files

Romset Files

Skinpack Files

/Files/Dash/
/Files/Apps/
/Files/Emus/
/Files/Roms/
/Files/Skins/

Appendix F: Setting up your Debug Xbox

Firstly you need to obtain a copy of the Xbox Development Kit (XDK). It is available on most of the P2P (Peer-to-Peer) file sharing networks so it shouldn't be too hard to find. The version you want to get is either **XBOX SDK 5849 December 2003-COMPLEX** or **XBOX.XDK.5933.UNOFFICIAL-WAM**. Also, please don't ask any of us for it as we will simply ignore you. Not meaning to be harsh or rude by doing this, but I had to get the XDK the hard way (very hard way, on a 56k modem) so it won't hurt the rest of you to get it yourselves. Also, it's over 700mb so there's no way I could email it to anyone.

Once you've obtained this, install the XDK setup file **XDKSetup5xxx.exe**. This will put all the necessary files on your PC. Now, extract **XDKRecovery5xxx.exe** using WinRAR (Do not try to install this). You'll need to copy these files to your Xbox; the table below shows what files you need.

Source (PC)	Destination (Xbox)	Files to copy / Notes
\XDASH	\C\	xshell.xbe only
\XDASH\data	\C\data	All files, recursive
\XDASH\images	\C\images	All files, recursive
\XDASH\media	\C\media	All files, recursive
\XDASH\sounds	\C\sounds	All files, recursive
\XDKSAMPLES	\C\XDKSAMPLES	All files, recursive
\XBOX	\E\	dashboard.xbx and xbdm.c
\DEVKIT	\E\DEVKIT	All files, recursive
\TDATA	\E\TDATA	All files, recursive

Now, you have to create a file called xbdm.ini, and place it in \E\DEVKIT.

Edit xbdm.ini like this:

```
[xbdms]
dbgname name=XXXX
staticip addr=EEDDCCBBAA
memtrack flags=0x0 stackdepth=0x0
```

XXX is the name you want to give to your Xbox (i.e.: Xbox) and EEDDCCBBAA is the static IP address you want.

Be careful don't write your IP as usual, you must type it in hexadecimal, and from right to left. For example, instead of typing 192.168.0.82 you have to write 5200A8C0 (it works by pair 192 is equal to C0 in hexadecimal etc.... look at the colours). The easiest way to convert Decimal values in hexadecimal is to use the calculator in windows, using scientific mode. To access this, open up the calculator and select **View -> Scientific**.

Next, you have to have to edit the file **dashboard.xbx** located on your Xbox's E Drive (or in \XBOX on your PC).

Firstly, grab a Hex Editor (such as Hex Workshop) and open the file, the reason why we are editing it with a hex editor is because it won't work using Notepad or WordPad.

You'll see this line in the file: `\Device\Harddisk0\Partition2;xshell.xbe`

You have to edit this so it will boot a dashboard of your choice.

Firstly change the Partition number. The numbers are as follows: 2 boots C, 1 boots E, 6 boots F, and 7 boots G.

Secondly, edit the name of the file which will be booted (for example, change xshell.xbe to evoxdash.xbe). If you still want to have the XDK Dashboard you can easily just add a link in your dashboard to launch xshell.xbe from C Drive.

Here are some examples:

```
\Device\Harddisk0\Partition2;evoxdash.xbe - Boots evoxdash.xbe from C Drive
\Device\Harddisk0\Partition1;evoxdash.xbe - Boots evoxdash.xbe from E Drive
\Device\Harddisk0\Partition6;evoxdash.xbe - Boots evoxdash.xbe from F Drive
\Device\Harddisk0\Partition7;evoxdash.xbe - Boots evoxdash.xbe from G Drive
```

That's the hardest part done...

Once that is all done, go to **C:\Program Files\Microsoft Xbox SDK\Xbox\bin** on your PC and install the 2 following programs (Note: you will need Administrator's Privileges to install these)

netsimsetup.exe
XBSESetup.exe

Once you've installed these programs, you should see this icon on your desktop:



When this appears, double-click on it and it will take you to your Xbox Neighborhood.

The first thing to do is to set it up with your Xbox, which can easily be done by selecting **Add Xbox**. Type in your IP Address for your Xbox when prompted, and when it asks is this the default Xbox, say **Yes**.

In order to get the Xbox to boot in Debug mode, you need to use the Phoenix BIOS Loader. I have already included a debug bios as the 2nd booting BIOS, so to start your Xbox in Debug mode, turn your Xbox on (with the modchip on of course), then as soon as you see something on your Monitor / TV, open your DVD Drive Tray, this will tell PBL that you want to use the 2nd BIOS, which is of course the Debug BIOS.

Once you have this installed, there are so many more capabilities of your Xbox. Here are 3 of the most common uses:

- Developing your own Xbox software and being able to use full remote debugging facilities
- Screen grabbing and movie grabbing
- Reverse engineering software (for making game trainers, etc)

So in general, normal gamers will not have to worry about using this, as it's only for developers and advanced enthusiasts.

Appendix G: Softmodding Tutorials

Special thanks to Pirrup for these tutorials.

Hard Drive Upgrade using a Modchipped Xbox

Hardware Needed:

- Hex Screwdriver Set
- Computer
- A modded Xbox (chip)
- A softmodded Xbox with retail disk.
- A bigger HDD

Software Needed:

- FTP software (FlashFXP)
- EvoX dash (to make eeprom backup, install it on both Xboxes)
- Xbox-HQ Auto Installer Deluxe Boot Disk.
- Config magic (install it on chipped and softmodded Xbox)

Steps:

1. Use EvoX to make an eeprom backup from your chipped Xbox and the softmodded Xbox (you can install EvoX as a dashboard)
2. FTP the backup Eeproms to your PC, also transfer your C and E drive (softmodded Xbox) to your pc.
3. Put the big HDD you need to prepare in your chipped Xbox.
4. Run Xbox-Hq Auto Installer Deluxe Boot Disk and make the big HD ready. (Don't forget to install Config magic on this HDD)
5. Open the Config magic folder and delete the contents in the data folder and transfer your backup of the C and E drive to the data folder.
6. Update your chipped Xbox eeprom from the bin file. (Eeprom backup from softmodded Xbox).
7. Reboot the Xbox and open Config magic and lock the HDD. (Now it's locked with the eeprom from the softmodded Xbox)
8. Turn off Xbox and remove the big HDD out the chipped Xbox.
9. Put it in the softmodded Xbox

Now, the HDD will work in the softmodded Xbox.

***** Optional if you play on live with your chipped Xbox *****

10. Run Config magic again on the chipped box and update eeprom. (This time with the eeprom backup from chipped Xbox). This will restore your chipped Xbox eeprom back to original.

Hard Drive Upgrade using a PC

Hardware Needed:

- A PC, a blank CD-R/W and a CD Burner
- Torx 10 + Torx 20 Screwdrivers (to open your Xbox)
- A Large HDD

Software Needed:

- XboxHDM 1.9
- FTP Program (FlashFXP)
- EvoX dash (can be installed as an app)
- DVD Decrypter

Steps:

1. First make a backup from your retail disk (C, E drive and your eeprom), you can use EvoX to backup eeprom (eeprom backup can be found on E).
2. FTP your backup data to your PC using a FTP program.
3. Unpack XboxHDM onto your pc
4. Put the eeprom backup in the xboxhdm\linux\eeeprom folder, put C and E folder into the xboxhdm\linux folder and overwrite the ones already there.
5. In the root of xboxhdm is a file named 'make-iso-win', run this file and wait for it to finish.
6. It will make an .iso file. (You can burn this file with DVD Decrypter)
7. Take out all your hard disks in your PC and put the new hard disk (for the Xbox), make sure its primary master and first boot is CD-ROM.
8. Put the disk you made in the CD-ROM drive and boot your PC.
9. You will get a menu, now choose Option 1 (by typing "1") and press enter to boot VGA console with Xbox-drive utilities (default). Type "xboxhd" when it asks you for a login. Another list of options will show up, choose option 1 again (the one that says "Build a new Xbox HD from scratch") and it will begin to format and write the partition table etc. If you put your C:\ and E:\ onto the CD then when it asks you about them type yes and when it asks you if you would like an F select yes.
10. Reboot your PC (we are almost done)
11. Now for locking the hard drive. This time type "3" and hit enter to boot Linux with locking/unlocking utilities. Next, type in "lockhd -a". It will now search for the eeprom on the CD and will automatically lock the hard drive. Now turn off the PC and take out the hard drive when it has finished locking. Put the disk in your softmodded Xbox.

You just upgraded your hard drive and can be used in your softmodded Xbox.

Hotswap Tutorial - Recover a HDD without Eeprom Backup

Hardware Needed:

- A PC (remove all HDD's), blank CD-R/W and A CD Burner
- Torx 10 And Torx 20 Screwdrivers - To Open XBOX

Software Needed:

- XboxHDM 1.9
- DVDdecryptor (<http://www.dvddecrypter.com>)
- C drive backup or latest MS dash

IMPORTANT: Make sure the Xbox and PC are close to each other

Steps:

1. If you got a backup of your C you don't need to download latest MS Dash, if you don't have a backup download MS Dash and keep it ready on your PC.
2. Unpack xboxhdm onto your PC.
3. Put the MS Dash in the C folder into the xboxhdm\linux folder and overwrite the ones already there.
4. In the root of xboxhdm is a file named 'make-iso-win', run this file and wait for it to finish. It will make an .iso file.
5. Burn this file with DVD Decrypter, and leave the CD in the PC.
6. Unplug the Xbox DVD-ROM IDE cable, take the power cable off the DVD-ROM.
7. Turn on the PC, Before the PC BIOS looks for Hard Drives, hit the Pause/Break key. It should pause at this time.
8. Turn on the Xbox.
9. It will boot to an error code (#11) regarding the DVD-ROM, but the Hard Drive will be unlocked, this way you'll get xboxhdm to access it on first attempt
10. Hit space bar to continue booting the PC. If it takes a long time to boot (several minutes), then the HD has not been unlocked.
11. You will get a menu, now choose Option 1 (by typing '1') and press enter to boot VGA console with Xbox-drive utilities (default). Type 'xboxhd' when it asks you for a login. Another list of options will show up, choose option 1 again (the one that says 'Build a new Xbox HD from scratch') and it will begin to format and write the partition table etc. when it asks you about C type yes and when it asks you if you would like an F select yes .
12. Power down PC and Xbox.
13. Put the Hard Drive back in the Xbox and boot.

PLEASE NOTE: If you get a message about a frozen drive, just disable auto detect for the drive (xboxhdm will detect the HDD even if it's disabled!)

Hard Drive Cloning using Chimp

Hardware Needed:

1. A Y power splitter (or use an external power source for the second HD, like another PC or external disk box etc.)
2. Torx 10, 15, 20 Screwdrivers to open Xbox and replace the HD

Software Needed:

3. Chimp (installed as an app)

Steps:

1. Open the box with the Torx 20 Screwdriver.
2. Use the Y splitter so both Hard Drives would have power when Xbox is on.
3. Loosen the DVD's IDE, but must still be bootable (it minimize the remove chance of IDE damaging as it is really not designed for hotplugging).
4. Boot Xbox.
5. Launch chimp.
6. Swap the IDE cable from DVD to the new HD.
7. Follow the menu (the first item must be run before others).

Xbox 1.6 problems?

If you have a 1.6 box and you can't see the Linux prog (graphics). In that case, you need to telnet into it, the menu will be same.

Appendix H: What do all these Applications do?

Special thanks to FunkyDopeLoven for this section.

Bios Checker

- Determines the bios that is currently in use either on TSOP or modchip

BoXplorer

- File manager for Xbox
- Browse, copy, move, delete and rename files and folders on the Xbox hard disk and DVD drive
- Play Xbox video media files (*.WMV)
- Launch other application or games (*.XBE files)

Chimp

- Allows you to upgrade your Xbox HDD in place by hotplug a second HDD

ConfigMagic

- **Warning:** This application can make your Xbox useless if used incorrectly.
- Backup/restore/change your EEPROM
- Lock/unlock your hard drive
- Shows such information as your Xbox's DVD region, what DVD drive you have, and your hard drive password for locking/unlocking it

Complex Tools

- Rip any XBOX DVD Game to drives E, F and G
- Launch installed titles with the press of a button
- Uninstall titles with the press of a button
- UnRAR support for easy installation of releases
- "On the fly" ISO extraction from RAR archives
- Extract Xbox .iso images easily.
- Samba Share support: UnRAR and extract ISO's to your Xbox from a PC share
- SFV Checker to check for bad CRCs in your releases
- Built in FTP Server
- Media Patching Option
- MP3/S3M/MOD/XM/IT background music player
- Supports PX-HDD paths

Dvd2XboX

- Copies disks directly to your Xbox hard drive or to SMB share
- File manager
- Game manager

Enigmah NTSC-PAL Video Switcher

- Change the Video Setting on your Xbox to either PAL or NTSC

DVD-X (Team Gueux version)

- Basically the same as DVD-X 1.0 except it offers DVD Remote support.

DVD-X (Team Xecuter version)

- Full featured, region free DVD player with or without the DVD playback kit using the controller

Halo Cache Editor

- Used to modify such things as maps, weapons, and vehicles

LinksBoks

- Fully functional web browser using the Xbox controller
- Tabbed browsing

Mimesis 2

- Multiple game support
- Auto Update Management (backup, restore, delete, and install new)
- Content Management (enable, disable, install from MCP).

MouseTestApp

- Tests your USB mouse for compatibility with the Xbox

Phoenix BIOS Loader MeToo Edition

- Lets you load a BFM BIOS on your Xbox, great for when you don't want to flash your chip.

ProjectX HDDLoader

- Copies games to the hard drive
- Real time progress display
- Checks disk size to make sure there is enough room for the game
- Auto patches for known game protections

X2 Config Tool

- The old X2 configuration program.

X3 Eeprom Eraser

- Erases the eeprom for you X3 modchip.

Xbox FTP client

- FTP program

Xbox Media Center

- What doesn't it do?
- Multimedia player
- Plays numerous multimedia formats
- Can stream media from your PC
- Not the #1 choice for watching a DVD though it is possible using the "stack" feature

Xbpartitioner

- **Warning:** this program is for partitioning and formatting your Xbox hard drive. Use if you know why you're using it

XBWatch

- Sets the time and date using an Internet connection.

xCbr

- Comic viewer, reads .cbz or .cbr files

XCommanderR2

- File manager

X-DSL (Xbox Damn Small Linux)

- Linux for the Xbox

XeniumTest

- Is your Xenium chip real or a fake? This program can help tell you.

Xored Trainer Launcher

- Launch ETM and XBTF Trainer Files
- Skinnable Interface
- Play music from your MS Custom Soundtrack

XToolbox

- File manager
- Copies disks to the hard drive
- Ability to change your Xbox's nickname

YAMP

- Plays most common file formats like mpeg, xvid, divx, mp3 etc
- Play from either local hard disk or stream from remote PC using Relax v0.5
- Playlists (.m3u & create your own)
- Subtitles (.srt) file format
- Postprocessing, which improves picture quality a lot?
- IR remote support
- JPEG viewer
- Supports wide screen TV's
- Supports progressive scan

Appendix I: Modifying the AID ISO with Addon Packs

What you need:

WinZip
WinRAR

Making Addon packs for AID 4 might be a little complicated at first, but after making a few you will see that it's not really that difficult. I'm going to explain how to make 3 of the most common Addon Packs that the AID ISO Updater can integrate into the original ISO (or of course to update your existing one).

Creating Addon Packs

Before I go any further, take a minute to look over **Appendix E** if you haven't already, this shows the ISO structure, and where the files are located.

For example, let's say we want to make an Addon Pack with a new version of XBMC.

1. Firstly, create a work folder, let's call it C:\Work\
2. Make two folders in here called **Config** and **Files** (Since XBMC requires Config files we'll make that folder too).
3. Grab the latest XBMC, and extract it so you have all the files
4. Make sure the folder containing all the files is called XBMC, then .zip that folder.

Example:

```
\XBMC\                                ←- you need to .zip it at this level.  
\XBMC\default.xbe  
\XBMC\....rest of the files
```

5. Go to the **Files** folder you created, and create a folder called **Dash** inside that. Now place that xbmc.zip file you just created in there. MAKE SURE IT'S NAMED xbmc.zip (or whatever the original filename was) OR YOU WILL HAVE PROBLEMS WITH AID USING IT PROPERLY.

At this time if you're only updating an Application you're done, proceed down to Step 9.

6. Go back to your extracted XBMC, and .zip the **Userdata** folder. This will be your Config .zip file.
7. Go to your created **Config** folder, and make three folders: **Apps**, **Dash**, and **Softmod**. You will also need to create a folder called **XBMC** inside those three new folders too.
8. Grab your created Config file, and place it in one of the XBMC folders. Rename it to e.zip, then copy it twice and rename to f.zip and g.zip so that the new Config files will work for all settings. Once you have all those three files, continue to copy them into the other folders (Apps, Dash, and Softmod).
9. Go back to the C:\Work\ directory where you see both the Files and Config folder, Select both and then right-click to select WinRAR to compress. This way you're keeping the original structure as the ISO, and it will integrate perfectly.
10. All Done ☺

Creating Skin Packs

To try and make this a bit simpler to understand, I've given you the Path for where the Skins go for the Dashboard. You need to create the same folder structure when creating your Skin Packs.

The instructions are all the same, except for XBMC which will be explained in it's section.

1. Once you have all the skins you want, then make a .zip file of the root folder of that path (ie: AnodXData, Media, Skin).
2. Create a work folder (C:\Work), and create a subfolder called Files, then a folder called Skins inside the Files folder, put the created .zip file in there.
3. Go back to the C:\Work\ directory where you see the Files folder, right-click to select WinRAR to compress. This way you're keeping the original structure as the ISO, and it will integrate perfectly.

Anod-X Path: \AnodXData\Skins\

Avalaunch Path: \Media\Skins\

EvolutionX Path: \Skin\

UnleashX Path: \Skins\

XBMC Path: \Skin\ (SkinPacks however are made from the Root Directory)

4. Create a work folder to put your Skin folder in, then put your skins inside that. Navigate back to the folder where you made the Skin folder, and .zip it there.
5. Create a work folder (C:\Work), and create a subfolder called Files, then a folder called Skins inside the Files folder, put the created .zip file in there.
6. Go back to the C:\Work\ directory where you see the Files folder, right-click to select WinRAR to compress. This way you're keeping the original structure as the ISO, and it will integrate perfectly.

Creating Romsets

This is probably the easiest Addon pack to make.

Firstly, look at **Appendix J** to show the systems / consoles that you can make Romsets for, and take note of the second column (the Romset Filename).

1. Grab all your ROMs and put them in a folder.
2. Go inside the folder where the ROMs are, and make a .zip file of that folder (unlike the Addon Packs we don't want any file structure).
3. Once you have your .zip file, create a new folder called **Files**, then a folder called **Roms** inside that. Put the newly created .zip file in there.
4. Go back a couple of folders so you can see the Files folder you created, right-click and compress with WinRAR.
5. All Done ☺

Appendix J: Using USB Devices for SID

The USB -> Xbox Cable

It's a known fact that the Xbox console uses USB to connect its controllers, however with their fancy adapter that inserts into the Xbox it makes it hard to use a normal USB Device.

You can purchase this cable pre-made from the following stores:

Llama's Adventures (US Store) - Electric Quarter (US Store) - Midwest-Games_(US Store)

Alternatively, you get this cable when you purchase the Mega X-Key.

For those of you that wish to build their own cable, below you can see a wiring diagram.



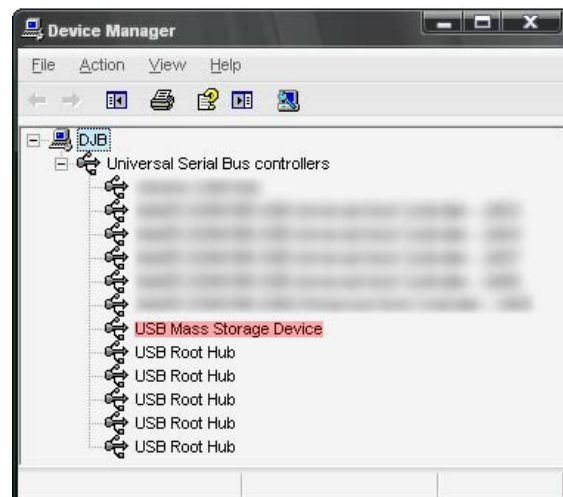
Preparing the USB Device to use with Action Replay

There are a few steps required here, but once it is all done your USB device will always be recognized as an Xbox Action Replay device. This was tested using a Xbox 1.6 and PC running Windows XP Professional.

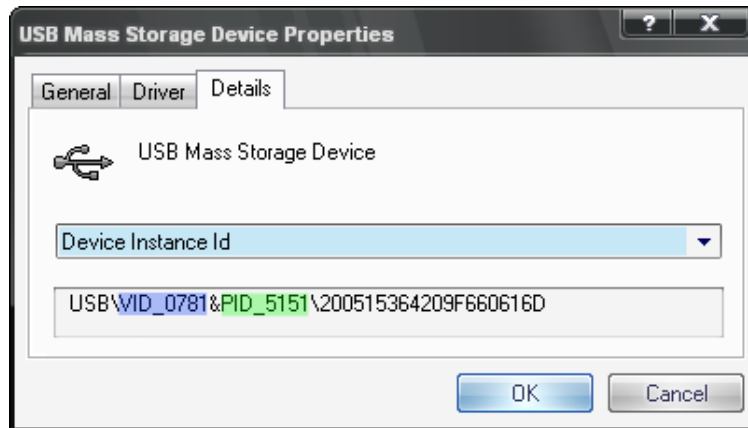
- Plug your USB Device into the PC and let it be recognized.
- Right-Click on **My Computer**, and select **Properties**.
- Navigate to the **Hardware** tab and select **Device Manager**.

Now, this is where the fun starts...

- This screenshot shows the Device Manager, what we are looking for is the USB Mass Storage Device which you just plugged in to the PC (the line highted in Red in the screenshot). Double-click on it.



- Navigate to the **Details** tab where you will find the **VID** and **PID** for your USB device. You will need to take note of these for later. The screenshot below shows you where you can find them: So in this example, the VID is 0781 and the PID is 5151.



- The next thing you need to do is edit the xbreader.inf file (the Action Replay Drive which can be found in the folder called Drivers where Action Replay is installed. I suggest making a copy of this folder and editing it rather than editing the original.

Open the xbreader.inf file with Notepad, and look for this section of code:

```
[_Devices]
%S_DeviceDesc1%=_Install1, USB\VID_05FD&PID_DBAE
%S_DeviceDesc1%=_Install1, USB\VID_05FD&PID_0316
%S_DeviceDesc1%=_Install1, USB\VID_045E&PID_0280
%S_DeviceDesc1%=_Install1, USB\VID_045E&PID_0381
%S_DeviceDesc1%=_Install1, USB\VID_0738&PID_4507
%S_DeviceDesc1%=_Install1, USB\VID_040B&PID_6520
%S_DeviceDesc1%=_Install1, USB\VID_05E3&PID_8001
%S_DeviceDesc1%=_Install1, USB\VID_05FD&PID_9011&REV_0100
%S_DeviceDesc1%=_Install1, USB\VID_05FD&PID_9001&REV_0100
```

You need to add a line to this section with the VID and PID you collected earlier. For example, this is what I used for my Sandisk 256mb Cruzer Micro:

```
[_Devices]
%S_DeviceDesc1%=_Install1, USB\VID_0781&PID_5151
%S_DeviceDesc1%=_Install1, USB\VID_05FD&PID_DBAE
%S_DeviceDesc1%=_Install1, USB\VID_05FD&PID_0316
%S_DeviceDesc1%=_Install1, USB\VID_045E&PID_0280
%S_DeviceDesc1%=_Install1, USB\VID_045E&PID_0381
%S_DeviceDesc1%=_Install1, USB\VID_0738&PID_4507
%S_DeviceDesc1%=_Install1, USB\VID_040B&PID_6520
%S_DeviceDesc1%=_Install1, USB\VID_05E3&PID_8001
%S_DeviceDesc1%=_Install1, USB\VID_05FD&PID_9011&REV_0100
%S_DeviceDesc1%=_Install1, USB\VID_05FD&PID_9001&REV_0100
```

- Navigate to the Driver tab on the window where you got your PID/VID information, and select Update Driver.



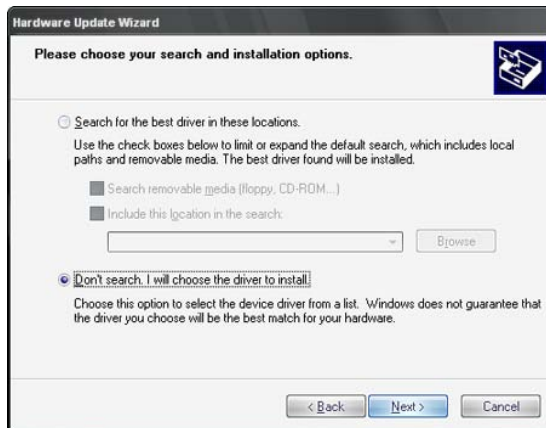
- This takes you to the Hardware Update Wizard, where you load your modified Action Replay Driver into Windows. Use these options in this order to install the Driver to your PC.

- Do not connect to Windows Update to search for software, Press **Next**.
- Install the driver from a specific location, Press **Next**.
- Don't search, choose a driver to install, Press **Next**.
- Press the **Have Disk** button
- Press **Browse** to the location where your modified Driver is. Then Press **OK**.
- Select the MaxDrive Xbox Driver, Press **Next**.

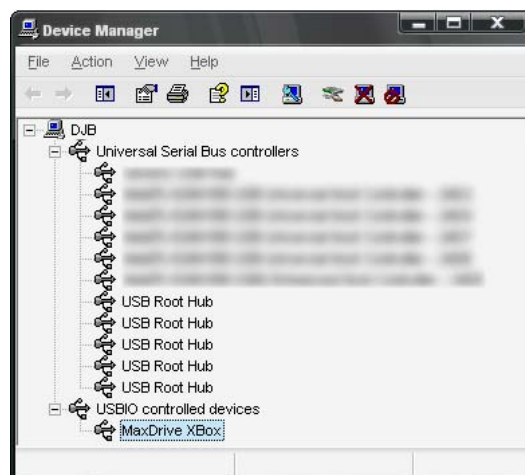
The driver should now install itself to Windows.

Once the installation is successful, remove the USB Device.

On the next page are some screenshots of this process.



- Restart the Device Manager and plug in your USB Device. It should now show up as a USBIO controlled device.



Bibliography

www.xbox-hq.com

Various Tutorials & Forum Posts.

www.xbox-linux.org

Xbox DVD Drive Identification HOWTO. ([link](#))

Xbox CD / DVD Burning HOWTO. ([link](#))

www.xbox-scene.com

Various Tutorials & Forum Posts.

www.hydras-world.com

Debug Xbox Information. ([Link](#))

Credits

Installer

Interface used UnleashX v0.38.0515 Build 565

Scripting &Graphics by DJB

Music "Last Ninja Extended" by Instant Remedy

Auto-Installer Deluxe v2 Soundtrack (*Addon Pack*)

"Dutch Breeze (Progressive Uplift)" by Lagerfeldt

"Tower Power (Dance remix)" by DaFunk

"Anal-ogue (to the higher state)" by Mixer

"Chaos PC" by DJB

Auto-Installer Deluxe v3 Soundtrack (*Addon Pack*)

"Toennel Commando Remix (Final Edit)" by Jurek Raben

Tested by
DJB
Forahobby
Robzzombie
TheRealHypnotix
FinalCloud
Yoshie

Documentation

Written by
DJB
Pirrup (Appendix G)
FunkyDopeLoven (Appendix H)

Proof Read by
DJB
Forahobby
FinalCloud
Yoshie